

11. A RESOLUTION APPROVING A PARKS AND RECREATION FIVE-YEAR PLAN.

STAFF REPORT_____

QUESTIONS FROM COUNCIL ON STAFF REPORT_____

READING OF RESOLUTION NO. R-48-08_____

A RESOLUTION APPROVING A CITY OF PULLMAN PARKS AND RECREATION FIVE-YEAR PLAN UPDATE FOR 2008-2013.

DISCUSSION_____

ACTION TAKEN_____

NOTES:

REQUEST FOR COUNCIL ACTION

For Meeting of: 5-20-08

ACTION REQUESTED

Act on the proposed Parks & Recreation 5-Year Plan update.

BACKGROUND

The city of Pullman Parks & Recreation 5-Year Plan is updated every five years to ensure its relevance to community needs and to maintain the city's eligibility for recreation facility funding from such organizations as Recreation Conservation Office (ROC). The attached plan has been prepared to replace the 2002 Pullman Parks & Recreation Plan. The draft plan contains background information on the community, an inventory of park facilities and recreation programs, a needs assessment (in the form of results from a local public opinion survey, a discussion of levels of service standards for parks and recreation facilities, and goals and objectives for parks and recreation in the community.

The city's Parks & Recreation Commission unanimously recommended adoption of the draft plan at its meeting on May 14th, 2008. Also, the staff at ROC has reviewed the proposed plan and has deemed it acceptable. In order for the city to be eligible to apply for funding this year regarding facilities such as the Johnson Road Path and South Fork Bridge, an adopted 2008 Parks & Recreation 5 year plan must be submitted to ROC by June 2, 2008

RECOMMENDATION

Adopt the proposed plan by resolution.

FISCAL IMPACT

\$ _____

BARS Code Number _____

SUBMITTED BY

ATTACHMENTS FOR COUNCIL REVIEW/ACTION

1. Resolution No. R - 48 -08

Name: Alan Davis
Kurt Dahmen

Title: Park Superintendent
Recreation Superintendent

Department: Public Service, Parks & Recreation

REVIEWED BY

	Initial	Date
Department Head	AD	5/15/08
City Supervisor	PP	5/16/08
City Attorney	my	5-15-08
(As To Form)		

905/16/08

RESOLUTION NO. R- 48 -08

A RESOLUTION APPROVING A CITY OF PULLMAN PARKS AND RECREATION FIVE-YEAR PLAN UPDATE FOR 2008-2013.

WHEREAS, the City Council for the city of Pullman has before it a Parks and Recreation Five-Year Plan attached hereto as Exhibit "A"; and,

WHEREAS, at a regular meeting on May 14, 2008, the Pullman Parks and Recreation Commission recommended adoption of the attached plan; and,

WHEREAS, this Council supports the adoption of the Parks and Recreation Five-Year Plan, which replaces the 2002 Parks and Recreation Plan, and which if effected, will promote the improvement of parks facilities and the provision of a comprehensive recreation program within the city of Pullman;

WHEREAS, this Council deems it to be in the best interests of the city of Pullman to have, in writing, a Parks and Recreation Five-Year Plan; now, therefore,

IT IS HEREBY RESOLVED by the City Council of the City of Pullman that the Parks and Recreation Five-Year Plan attached hereto as Exhibit "A" be and it is hereby approved.

ADOPTED by the City Council of the City of Pullman at a regular meeting held on the _____ day of _____, 2008.

DATED this _____ day of _____, 2008.

Mayor

ATTEST:

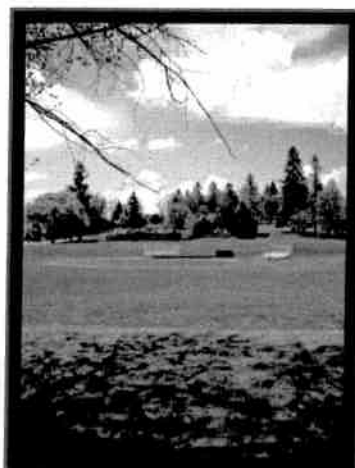
Finance Director

Approved as to Form:

City Attorney



City of Pullman Parks & Recreation 2008 Five Year Plan





City of Pullman

Parks & Recreation

Five Year Plan





Pullman Parks and Recreation Five-Year Plan

Adopted: May____, 2008

Mayor

Glenn Johnson

City Council

Francis Benjamin

Keith Bloom

Ann Heath

Bill Paul

C.B. "Barney" Waldrop

Nathan Weller

Pat Wright

Parks and Recreation Commission

Mick Nazerali, Chairman

Chris Clark

Jennifer Davis

Sarah DeVleming

Carol Johnson

Jon Lagerquist

Rod Schwartz

Parks & Recreation Department Staff

Alan Davis, Park Superintendent

Kurt Dahmen, Recreation Superintendent

Megan Vining, Recreation Supervisor

Jennifer Anderson, Senior Coordinator

Karen Johnston, Aquatic Coordinator

Jean Overstreet, Lead Preschool Teacher

Merlene Greenway, Administrative Specialist

Judy Lees, Administrative Specialist

Kirk Koefod, Lead Park Maintenance Worker

Jon Booker, Park Maintenance Worker

Guy Goedde, Park Maintenance Worker

Barry Hart, Park Maintenance Worker

Fern McLeod, Park Maintenance Worker

Steve Murphy, Community Service Representative

Dana Tompkins, Park Maintenance Worker

Varnel Williams, Horticulturist

Table of Contents

	Page
Introduction.....	9
I. Operations.....	11
II. 2005 Plan Review.....	17
a. Parks	19
b. Recreation	21
III. Executive Summary.....	25
IV. Recommendations Summary	29
V. Inventory and Analysis Report	35
Comprehensive Strategic Planning	37
Comprehensive Plan Consistency	37
Storm Water Management Program	38
Community Profile.....	39
Public Involvement.....	41
Historical Perspective	42
Inventory of Existing Facilities and Programs.....	46
Budget/Revenue Summary	47
VI. Master Plan Report.....	49
Level of Service Standards	51
Needs Assessment.....	59
VII. Goals and Objectives	65
VIII. Appendix	69
1. Pullman Park Map.....	71
2. Pullman Trail System Map	73
3. Arial Views of Parks	77
4. Pullman Transit System Map	83
5. City of Pullman, Comprehensive Plan, Chapter Nine Parks and Open Space Element	85
6. Notice of Open Houses	89
7. Web Posting.....	90
8. News Release	91
9. Needs Assessment Survey on Web	93
10. Open House & Survey Comment Summary	99

Introduction

The City of Pullman boasts more than 100 acres of parkland and 8 miles of city trails and paths that link to the 7 mile Bill Chipman Palouse Trail which runs between the cities of Pullman, Washington and Moscow, Idaho.

The \$1,050,000 Downtown Riverwalk project was completed in 2006 and is the newest link to beckon walkers to Pullman Trails and Pathways. This project was funded by donations from present and former members of the Pullman community, businesses, and a \$340,000 WA Wildlife and Recreation Coalition grant. This completed the trail connection from the locally funded 1999 Proposition 1 Koppel Farm Trail, which was an inner city expansion of the Bill Chipman Palouse Trail. In 2007 the citizens of Pullman passed a new \$2,250,000 Proposition No. 1 initiative for improvements to parks and paths. The additional trail expansion adds a Maple Street Extension linking campus to the downtown, a Palouse Highway addition linking the Military Hill area to the existing system and a Johnson Road connection adding pedestrian ways to housing developments to the southeast.

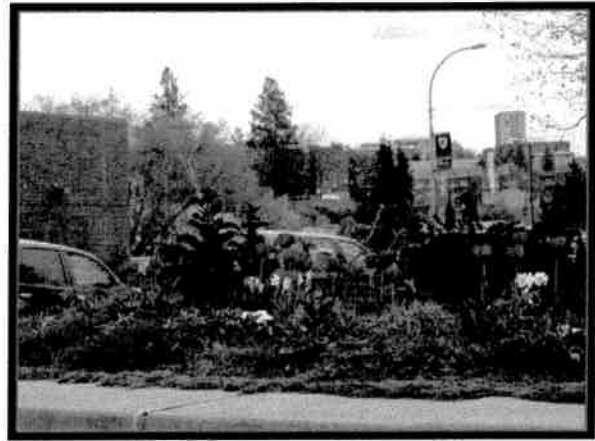
Recent developments to parkland include Terre View Park on Military Hill in 2003, Petry Park along the City Trail and Pathways in 2005 and the development of Itani Park on Sunnyside Hill which began in 2006 and will continue through 2009. The Pullman Aquatic and Fitness Center construction was fully funded by a private donation from Mary and Ed Schweitzer; it opened to the public in 2000. The facility was donated to the Pullman School District and built at Military Hill Park on grounds dedicated for park use; a joint City of Pullman and Pullman School District IAC funded project in the early 1970's. The pool is operated by the City of Pullman through an inter-local agreement. A Metropolitan Park District was established by voter approval in 2002 creating a continuous funding source for Parks and Recreation programs and development. 2007 Proposition No. 1 provided for improvements to restrooms at Kruegel Park, Sunnyside Park and City Playfields, and funding for a complete lighting renovation of the ball field complex at the City Playfields.

The Pullman School District is a significant partner in community access to recreational facilities. School playgrounds, gymnasiums and athletic fields are used for sponsored recreation division programs throughout the city. In 1990, the City of Pullman provided partial funding to enlarge the gymnasium at Sunnyside Elementary School in exchange for community access during non-school use. After constructing a new elementary school on Pioneer Hill in 1998, the School District offered half of the old Franklin Elementary School to the City for use as a community center. The City remodeled the 1957 portion of the building into the 8,000-square-foot Pioneer Community Center, which opened to the public in 2000; this has enabled the Recreation Division to increase the number of recreational activities offered to the Pullman community.

Washington State University (WSU) has also been a partner in community access to recreation facilities having participated in the Washington State Games, Cougar Plaza mini-park and the extension of the Bill Chipman Palouse Trail. In 2002 WSU completed construction of a \$54,000,000 state-of-the-art Student Recreation Center. At 150,000 square feet; the center offers cardio and weight equipment, seven courts for basketball, volleyball and badminton, roller hockey, indoor soccer, floor hockey, and inline skating, four racquetball courts, 5-lane lap pool, leisure pool, 53-person spa, activity rooms, elevated 4-lane running/walking track, and more. Community access is restricted to students, faculty and alumni for a fee.

Operations

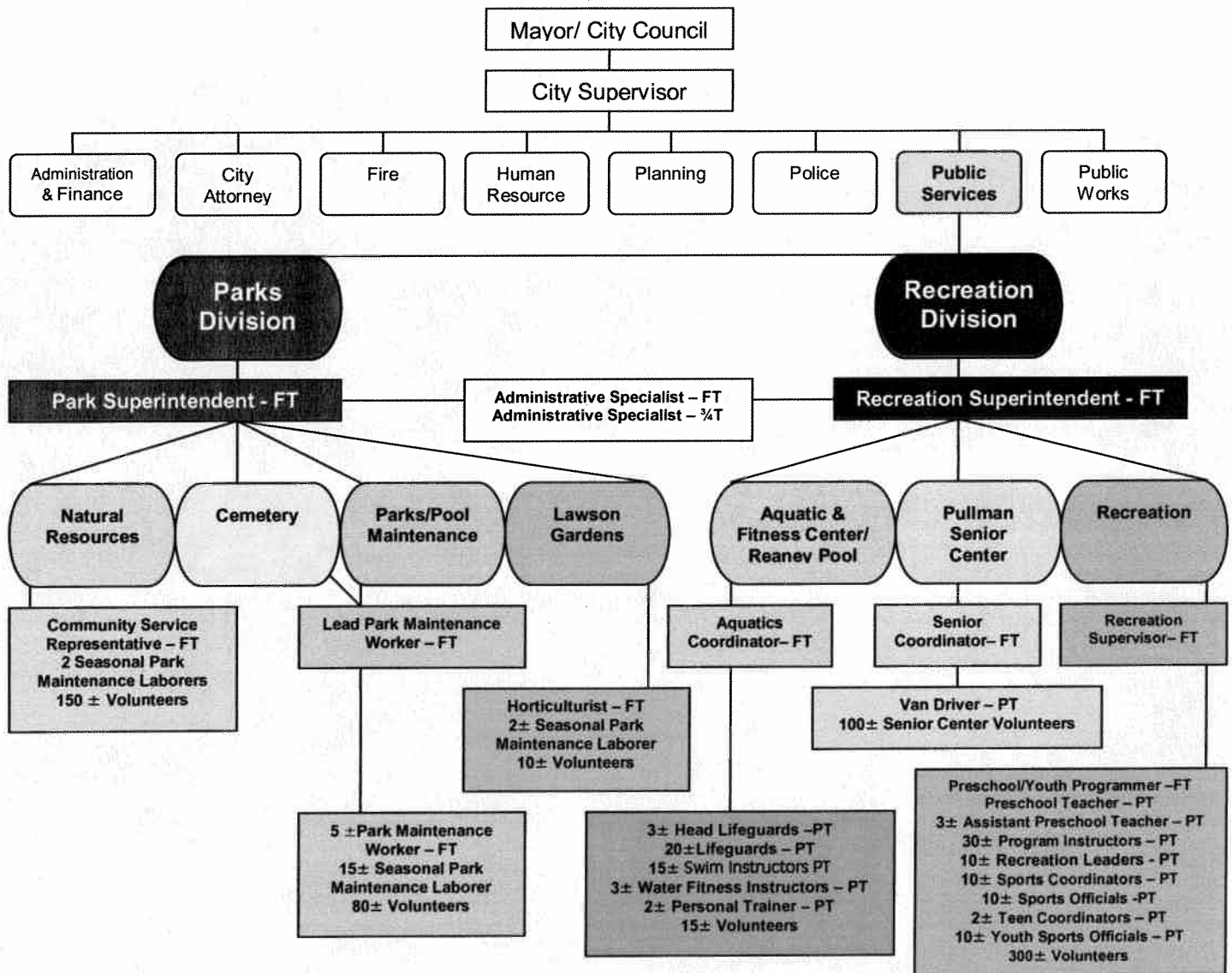
Section I



Existing Operations

The organizational structure of the City of Pullman government directs the management of the parks and recreation services. The city has eight separate departments that provide services to Pullman residents. Each of the departments reports to the City Supervisor, who in turn reports to the Mayor and City Council.

Parks and Recreation services are grouped under the Public Services Department. In 2002 the City Council decided to leave the department head position vacant as a cost-saving measure. As a result the Park Superintendent and the Recreation Superintendent were directed to manage their respective divisions. Below is the present organizational chart for Public Services.



Responsibilities of Parks & Recreation

The Parks and Recreation Department is responsible for implementing the City Council's goals and objectives by providing the citizens of Pullman with parks, green spaces, and recreational services.

- **Parks:** The division is under the guidance of the Park Superintendent, and is responsible for the day-to-day activities of the parks division. The parks division is to maintain and monitor general upkeep of 14 parks, numerous green spaces (Well 7, Cougar Plaza, Pine Street Mall, etc.), 3 city cemeteries, city trees, rv park, weed control, and the City trail and pathways system. This division also works with the Community to on compliance of city ordinances regarding solid waste, nuisance, weed control, and diseased trees.

The parks division is responsible for:

- Maintaining baseball and softball fields
 - Installation of new playground equipment, cutting, trimming, and weeding public shrubs and flower beds
 - Planting and maintaining downtown flower baskets
 - Trash and litter pickup in parks and public rights-a-way
 - Installing, repairing and maintaining picnic tables, benches, signs, playgrounds and other equipment
 - Aeration, fertilization, irrigation of turf, spraying lawn areas for weed control, spraying and fertilizing trees and evergreens for insect control, disease and proper feeding
 - Assisting with burials at city cemeteries
 - Repairing and maintaining park facilities
 - Working with city and civic groups on city celebrations such as 4th of July and Lentil Festival
 - Pool maintenance for Pullman Aquatic & Fitness Center and Reaney Pool
 - Working with civic groups such as the Pullman Civic Trust, Grand Avenue Greenway Committee, etc.
 - Community improvement (code enforcement)
 - The Park Superintendent is also extensively involved in design and construction of park improvement projects.
- **Recreation:** The division is under the guidance of the Recreation Superintendent, who is responsible for all matters pertaining to the administrative and professional duties involved in planning, developing and directing recreation programs and facilities for the Pullman community.

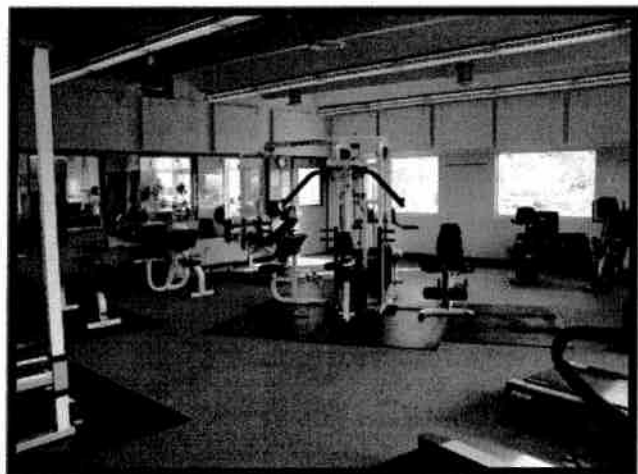
The recreation division is responsible for:

- Adult programs, e.g. art, dance, fitness, karate, outdoor recreation
- Adult sports, e.g. basketball, softball, golf, tennis, volleyball
- Aquatics, e.g. lifeguard training, swim lessons, special programs, water fitness

- Fitness facilities, operation of the fitness room at the Pullman Aquatic & Fitness Center
- Pools, staffing for the cities seasonal outdoor pool
- Preschool activities, e.g. Pullman Park & Recreation Preschool, summer camps, special holiday programs, etc.
- Teen activities, e.g. rafting, drama, trips, and other activities of interest to teens
- Senior and active adult activities e.g. computer classes, art, day trips, overnight trips, along with the day-to-day running of the Pullman Senior Center
- Youth Activities, e.g. art, dance, theater, personal safety, and other general youth programs
- Youth Sports Activities, e.g. basketball, flag football, golf, rookie league, soccer, wrestling, mini-hoops, pee wee soccer, summer sports camps, t-ball, tennis, volleyball
- Working with city and civic groups on city celebrations such as the Summer Concerts in the Park, Egg Hunt, Halloween Carnival, 4th of July and Lentil Festival.

2005 Plan Review

Section II



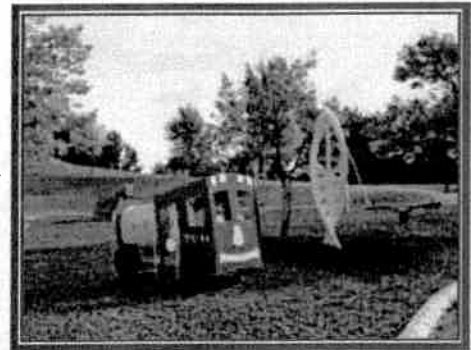
2005 Five Year Plan Review

PARKS: Goals & Objectives Review

Short Term Goal: **Improve existing park facilities.**

Objectives: **Continue to expand Lawson Gardens.**

Staff has completed the first installment of the stream bed improvements. A contract will be awarded in the summer of 2008 to complete the stream bed through the park to handle natural spring, well and runoff waters. The entrance paths and Terrace Garden graveled paths (Alvin Chandler Memorial Walk) will be improved with the installation of brick pavers under City Contract No. 08-07.



Upgrade or replace playground equipment at Harrison Tot Lot, Kruegel Park and Military Hill Park.

Scouts refurbished by painting and repairing all the existing play equipment at Kruegel Park. Staff installed a new climbing structure at Kruegel Park, a new Tug boat play apparatus in Harrison Tot Lot, and revamped the Military Hill playground including a “max-mixer” play structure, a rock climbing element, swing set, and jump pads. Staff also installed a new swing set at Terre View Park.

Construct an outdoor spray pool at Reaney Park.

Several plans were developed, but funding has been unavailable. Once funded, a Reaney Park and Pool Master Plan will address the future pool and park needs.

Replace or recondition the picnic shelter at Kruegel Park.

Scouts took on the project of painting and reconditioning the existing structure several years ago. In May 2007, the City of Pullman’s Capital Improvement Committee, with an endorsement of the Parks & Recreation Commission, agreed to set-aside Metro Park dollars on an annual basis to be applied to the construction of a new facility.

Upgrade restroom facilities at Kruegel Park, Reaney Park, Sunnyside Park and City Playfield.

2007 Proposition 1 included the construction of new restrooms at City Playfield, Kruegel and Sunnyside Park. Reaney Park restrooms were put on hold pending the development of a Reaney Park and Pool Master Plan.

Expand the City's existing recreational vehicle park and build a facility to provide showers and restrooms for recreational vehicle park users.

The city has met with local owners to express an interest in the adjacent land required for expansion. Public Works awarded a contract to improve the current sewer system and the Parks Division has worked with Washington State University civil engineering students to develop plans for a shower/restroom facility.

Short Term Goal: Cooperate with local organizations to enhance transportation corridors in the community.

Staff continues to serve on the Palouse Chipman Trail Committee, having served as Secretary, Vice-President and most recently President. The city has made accommodations for storage of trail equipment and continues to work on efforts to plow sections of a trail that has become a year-round alternative commuter corridor.

Coordinate with the Pullman Civic Trust and other local organizations to improve the community's pedestrian paths and to establish connections within pathway corridors.

City staff worked with Pullman Civic Trust to promote the passage of the 2007 Proposition 1, funding improvements for parks and paths. The vast support of the community made possible the construction of new paths, restrooms, and ballfield lighting at City Playfield. City staff has also met with Washington State Department of Transportation representatives, expressing our interest in the possible abandonment of the Union Pacific line as an additional path possibility.

Coordinate with the Grand Avenue Greenway Committee, local merchants, and other groups to beautify Grand Avenue and other major thoroughfares in the community through landscaping and other means.

The Grand Avenue Committee to date has raised \$67,108 and had a carryover of \$32,929 into 2008 dedicated to improvements along the north-south corridor. A number of projects have been completed to date; new raised planter beds, hanging baskets, the addition of the Mayors' grove, Kiwanis Park, Neill Public Library improvements, the WSU Presidents' Grove, and the Well 7 Park. The WSU Landscape and Architecture Design Studio created and presented plans to local organizations for future development north of Stadium Way.

Long term Goal: Establish and implement level of service standards for Parks & Recreation facilities in the community.

Objectives: Adopt formal levels of service standards, in keeping with the expressed needs of the community, to guide the development and maintenance of parks and recreation facilities.

Through the city's "budget by objective" format service standards are set and reviewed. Staff monitors actual costs and man-hours of maintenance activities for parks and facilities and adjusts during the yearly budget process to address changes due to public input, city-wide goal setting and direction

from the Parks & Recreation Commission. Capital planning projects are reviewed and prioritized on a city-wide basis yearly.

As community growth occurs, work with real estate developers to provide facilities in accordance with adopted level of service standards.

Recent examples include the donations of Itani Park, Terre View Park, Petry Park and the Pullman Aquatic & Fitness Center. Staff continues to work with the Planning Department by providing comment on each new development and how that addition will blend with and link to the existing park system.

RECREATION: Goals & Objectives Review

Short Term Goal: **Implement diverse recreation programs.**

Objectives: **Program development in new areas for the City of Pullman community.**

The Recreation department has been very active in pursuing new partnerships with other agencies in the City of Pullman and in the surrounding communities to offer new programs. The implementation of new programs included:

- **WSU Athletics:** Athletes' assistance with Punt, Pass & Kick competition, Parks & Recreation youth teams scrimmage at halftime of men's & women's basketball games.
- **Washington Recreation & Park Association:** Offer the following skills competitions – Basketball HotSpot; Baseball Pitch, Hit & Run; Soccer Challenge; and Football Punt, Pass & Kick.
- **WSU Human Development Department:** Class projects include additions to the Pioneer Center playground, Kruegel Park Art Studio renovation, and Spring Street Skate Park revitalization.
- **YMCA @WSU:** Offer cooperative teen programs and summer day camps.
- **Pullman Soccer Club:** Cooperate to offer Futsal and British Soccer Camp.
- **Skyhawks Sports Academy:** Expanded sport camp offerings.
- **Pullman High School:** Work with high school coaches to offer camps for boys and girls basketball; volleyball; Jr. High football; and soccer.
- **National Alliance for Youth Sports:** Provide guidance and materials to train youth sport coaches, officials, parents.
- **Delta Gamma Sorority:** Co-Sponsor annual Halloween Carnival for over 200+ youth.
- **Moscow Parks & Recreation:** Offer combined youth softball; adult softball and basketball programs to expand league offerings.

Short Term Goal: Provide a more diverse program for youth.

Objectives: Develop and implement programs for teens in cooperation with the Public Schools, Police Department and community businesses.

Teen activity coordinators continue to work with Lincoln Middle School staff that supports Parks & Recreation through advertising programs in the monthly parent newsletter, e-mail weekly calendar of activities to parents, and in hosting teen activities in cooperation with the department. In 2006 and 2007 staff worked with the Lincoln Middle School leadership class to send several students to attend the National Youth Congress Retreat at Brooks Memorial State Park in Goldendale, WA.

In 2004-2006, received grant monies from Pullman Police Department to purchase prizes for the annual Boards & Blades Lentil Festival Skate Competition.

Local businesses in the Pullman community such as Zeppoz, restaurants, movie theatres, and the ice skating rink in Moscow are utilized to entertain teens.

Short Term Goal: Continue to provide Washington State University Sport Management & Department of Education students with hands on-experience and supplement full-time city staff.

Objectives: Develop and implement internship and practicum opportunities within appropriate departments at WSU.

Since 2002, 102 Washington State University Sport Management students have assisted Pullman Parks & Recreation youth sports programs by coaching, officiating or being a coordinator/on-site supervisor.

The Recreation Department has also worked with the Washington State University Center of Civic Engagement to provide community placement opportunities for WSU students. Students have been placed as volunteers in the parks division, preschool program, youth sports, teen program, special events, dance classes, summer camps, aquatics, and senior center. In addition to individual placements, Parks and Recreation has provided as a community placement for WSU groups such as sororities, Human Development 205 and Communication 235 classes for long-term volunteering/service learning projects.

Short Term Goal: Provide vocational aquatic classes for Pullman High School students.

Objectives: Develop and implement a curriculum with Pullman High School staff that meets the standards and educational needs of their students.

The Pullman Aquatic & Fitness Center and Pullman High School continue to have a strong working relationship to offer several programs to high school students. PAFC provides instructors and PHS provides a certified teacher for one Physical Education class called hydro-fit; two days of lap swim curriculum and two days of water exercise curriculum.

Short Term Goal: Create a Metropolitan Park District.

Objectives: The creation of Metropolitan Park District would help support the operation of the Aquatic Center, Reaney Pool and Parks Maintenance.

On September 17, 2002 voters of Pullman approved Proposition 1, which called for the creation of a metropolitan park district. Voters agreed to a levy of 50 cents per \$1,000 of assessed property value. Money generated by the creation of the district supports aquatics, recreation programs and parks maintenance. The ongoing levy is expected to generate over \$476,000 in 2008. As part of this levy, the Parks & Recreation department is able to utilize 10% of the funds for capital improvements such as new playground equipment, bleachers at ball fields, and fitness equipment and pool covers at for the Pullman Aquatic & Fitness Center.

Long Term Goal: Continued support of financially disadvantaged population.

Objectives: Coordinating financial assistance through social service agencies.

The Care-to-Share fund, which was established over 20 years ago, continues to provide funds for children whose families are financially challenged. The fund, established through private donations, provides a 50% match in registration fees for children through age 17 who reside within the Pullman School District and whose family meets one of the following criteria: receive state income or energy assistance, receives food stamps, or the child receives free or reduced school lunches. Since 2006, the Care-to-Share Program has awarded 354 scholarships to individuals in need.

The Parks & Recreation department has gratefully received donations from the Pullman Child Welfare Association over the past couple of years, including \$1,500 in 2007, which allowed the department to provide 32 Reaney pool memberships to deserving youth in the community.

Long Term Goal: Develop a Community Center.

Objectives: Establish a Community Center to better meet the recreational needs of the community that are not currently being met due to increasing demand for indoor programs and resultant facility conflicts.

The development of a Community Center to serve the Pullman residents is still a need and high priority for the Parks & Recreation Department to pursue. Funding for a project of this magnitude will be a challenge, but the end result would be of enormous benefit to the community.

Executive Summary

Section III



