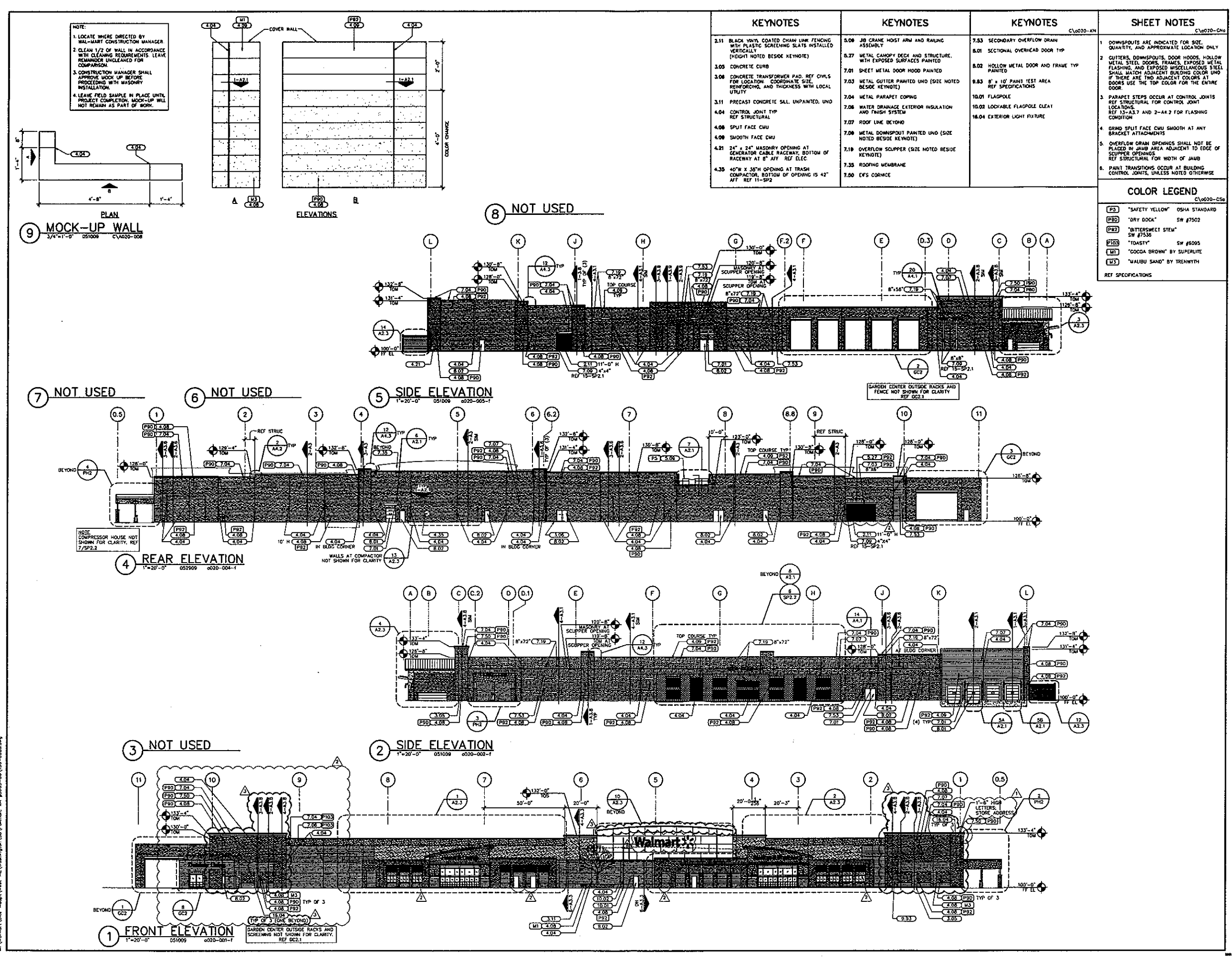
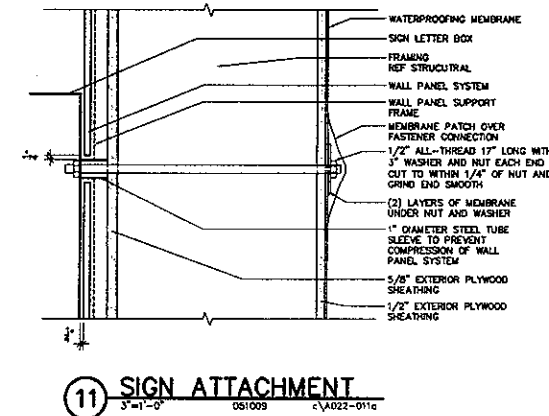
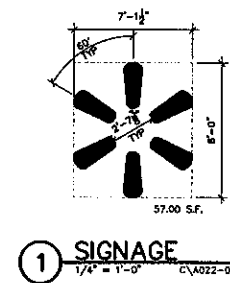
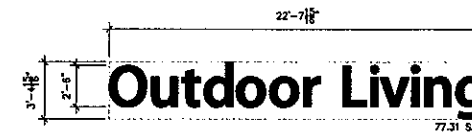
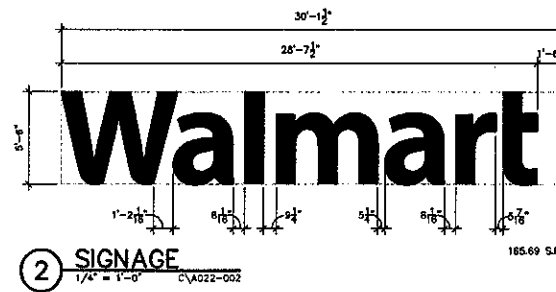
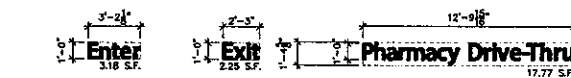


Dec 23, 2009 - 12:14pm - USER: crystal.jordan
M:\Walmart\Site\44001\West-AZ\Washington\USD\Pullman, WA\3005-00\150-0000.dwg



Feb 18, 2010 - 2:35pm - USER: arisa.hop
C:\Users\arisa.hop\AppData\Local\Microsoft\Windows\Temporary Internet Files\Content.I5870-03\PUWA_A2_2_02B10.DWG



SIGNAGE SCHEDULE				
FRONT SIGNAGE	QTY	COLOR	INDIVIDUAL AREA	TOTAL AREA
Walmart	1	WHITE	185.69 SF	185.69 SF
Outdoor Living	1	YELLOW	57.00 SF	57.00 SF
Market & Pharmacy	1	WHITE	102.74 SF	102.74 SF
Home & Living	1	WHITE	72.59 SF	72.59 SF
Outdoor Living	1	BROWN	77.31 SF	77.31 SF
TOTAL FRONT SIGNAGE				498.33 SF
PHARMACY DRIVE-THRU SIGNAGE				
Pharmacy Drive-Thru	1	WHITE	17.77 SF	17.77 SF
Exit	1	WHITE	2.25 SF	2.25 SF
Enter	1	WHITE	3.18 SF	3.18 SF
TOTAL PHARMACY DRIVE-THRU SIGNAGE				23.20 SF
TOTAL BUILDING SIGNAGE				498.53 SF

B | R | R

Walmart
PULLMAN, WA
STORE NO. 1870-05
JOB NUMBER: 07100039 PROJECT: 160

CHECKED BY: EPS
DRAWN BY: EPS
FILE NAME: 150-A022
PHOTO CYCLE: 052909
DOCUMENT DATE: 072409

SIGNAGE

SHEET: A2.2