

2011 LODD

To Date:

37

Who Has the TIC?

LODD at this point last
year:

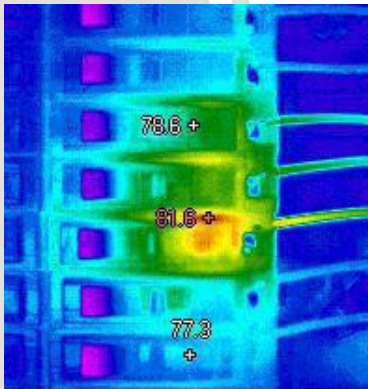
35

Can a TIC help you on an alarm investigation? How about a lost person in a field of grain? What about just general safety when doing a 360?

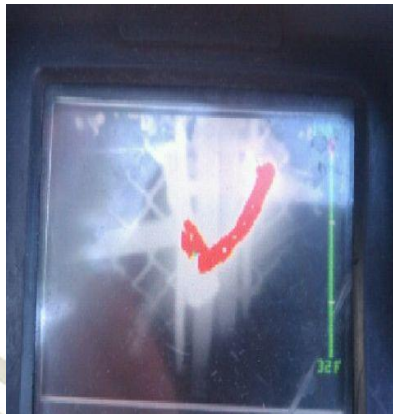
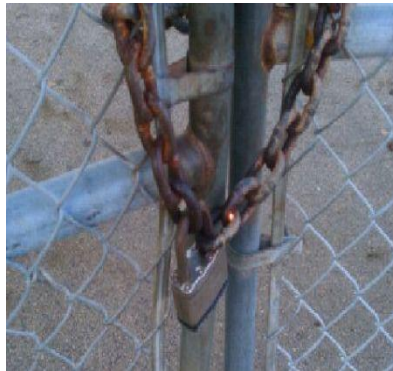
Why are these FF helmets whiter than the turnout?



Would it ever be handy to know exactly which breaker was the problem?



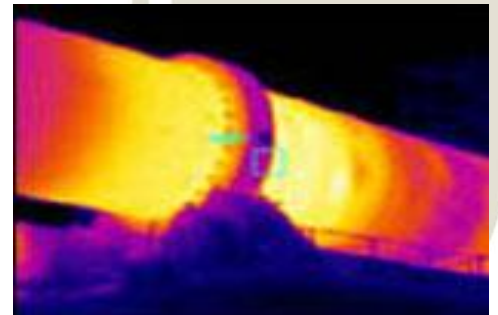
The photo on the top looks normal. The thermal photo on the bottom indicates a power line on the fence somewhere.



Can you see how full this tank car is?



Is the valve open or closed?



TICs are not just for fire or search and rescue. Step off the truck with a TIC in hand and you may be surprised what you see and learn.

Stay Safe!